

2021-2022 COVID-19 K-12 SCHOOL GUIDANCE

LENAWEE COUNTY HEALTH DEPARTMENT

Updated 10-20-2021

| | |
|--|----|
| Introduction | 2 |
| Updates | 2 |
| Mitigation Strategies..... | 2 |
| CDC COVID-19 PREVENTION STRATEGIES..... | 3 |
| Metrics to Assess Risk | 5 |
| QUARANTINE | 5 |
| Notification to LCHD of Known Staff and Student Exposures that occurred not on School Property | 7 |
| Standard School Quarantine and Alternate School Quarantine..... | 7 |
| Standard School Quarantine | 8 |
| Standard School Quarantine with Testing | 9 |
| Alternate School Quarantine: Stay in School (SIS)– No Testing Required | 10 |
| Alternate School Quarantine: Test to Stay in School (TTS) | 11 |
| Flow Chart | 12 |
| Acronyms and Definitions..... | 13 |
| Resources | 14 |
| Attachment: Test to Stay Notification | |

2021-2022 COVID-19 K-12 SCHOOL GUIDANCE

LENAWEE COUNTY HEALTH DEPARTMENT

Updated 10-20-2021

Introduction

This document was created by the Lenawee County Health Department to provide recommendations for mitigation strategies for COVID-19 in the school setting. **Future modifications to this document may be made based on state and federal recommendations.** LCHD school recommendations align with [MDHHS recommendations](#) and [CDC recommendations](#). The purpose of this guidance is to protect students, teachers, and staff, and maintain in-person learning.

- For questions, please call 517-264-5226, option 5 or email lenaweehd@lenawee.mi.us.

Updates

| Section Updated | Update Made | Date |
|--|--|------------|
| Staff and Student Out-of-Classroom Exposure Quarantine | Clarified that fully vaccinated individuals should get tested 3-5 days after exposure | 9/20/2021 |
| Classroom/Bus Exposure Quarantine | Added an option to return to in person education on day 8 with a negative test. | 9/20/2021 |
| Modified Quarantine | In the first paragraph, clarified the requirements for a modified quarantine | 9/22/2021 |
| Classroom Bus Exposure - Quarantine | Updated section | 9/22/2021 |
| Metrics to Assess Risk | Updated definition of a school associated outbreak | 9/22/2021 |
| Quarantine | Significant updates to quarantine section to better describe current quarantine and alternate quarantine options. Also added "Test to Stay" quarantine option. | 10/14/2021 |
| Close contact definition | Provided clarification on close contact definition in both the Quarantine section and Definitions section. | 10/20/2021 |

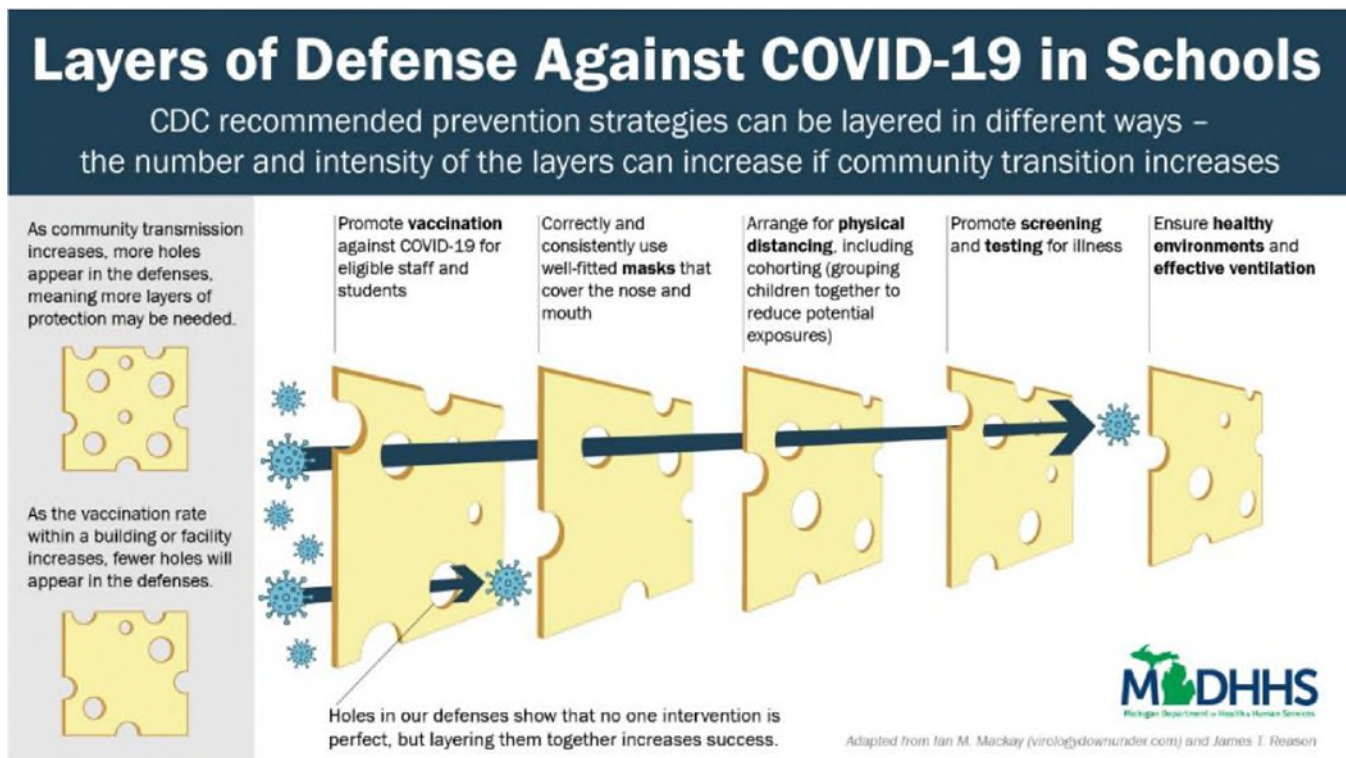
Mitigation Strategies

Schools can layer multiple prevention strategies developed by the CDC to prevent transmission within school buildings, reduce disruptions to in-person learning, and help protect those who are not fully vaccinated, which currently includes all children under the age of 12 years. All prevention strategies provide some level of protection, and layered strategies implemented at the same time provide the greatest level of protection.

2021-2022 COVID-19 K-12 SCHOOL GUIDANCE

LENAWEE COUNTY HEALTH DEPARTMENT

Updated 10-20-2021



CDC COVID-19 PREVENTION STRATEGIES

The key strategies recommended by the CDC to keep schools safer are listed in order of effectiveness:

1. **Promoting Vaccination** against COVID-19 for eligible staff and students. Vaccination has proven incredibly effective as the leading public health prevention strategy. Promoting vaccination can help schools more safely maintain in-person learning as well as extracurricular activities and sports.
2. **Requiring Consistent and Correct Mask Use for all**
 - a) Schools should mandate universal masking for students, staff, teachers and visitors. CDC recommends universal indoor masking for all teachers, staff, students, and visitors (age 2 and older), regardless of vaccination status. **This prevention strategy is crucial to allowing students to maintain in-person learning.**
 - b) Local health departments should work with schools to adopt universal masking policies.
 - c) **Mask use has been proven to substantially reduce transmission in school settings.**
 - d) CDC has recommendations for [proper use of masks](#).
 - e) [CDC's order requires](#) all persons – regardless of vaccination status – to wear masks on public transportation, including school buses.

2021-2022 COVID-19 K-12 SCHOOL GUIDANCE

LENAWEE COUNTY HEALTH DEPARTMENT

Updated 10-20-2021

3. **Physical Distancing** CDC recommends schools maintain at least 3 feet of physical distance between students within classrooms, combined with indoor mask wearing by students, teachers, and staff, regardless of vaccination status.
 - a) A distance of at least 6 feet is recommended between students and educators, and between educators/staff who are not fully vaccinated.
 - b) Mask use by all students, educators, staff, and visitors is particularly important when physical distance cannot be maintained.
 - c) Because of the importance of in-person learning, schools should not exclude students from in-person learning to keep a minimum distance requirement. When it is not possible to maintain a 3 foot physical distance, it is especially important to layer multiple other prevention strategies, such as indoor masking, screening testing, and improved ventilation to help reduce transmission risk.
4. **Screening Testing** identifies infected people, including those without symptoms who may be contagious, so that measures can be taken to prevent further transmission or outbreaks.
 - a) To support schools that incorporate COVID-19 testing into their safer school prevention plans, the Michigan Department of Health and Human Services is offering rapid antigen testing to Pre-K-12 schools through the [MI Safe Schools Testing Program](#).
 - b) Pooled PCR screening testing is also available through the Midwest Coordination Center. For information: Contact Candice Braxton: Braxton@testedandprotected.org or 614-424-3673.
5. **Ventilation**
 - a) [Improving ventilation](#) by opening multiple doors and windows, using child-safe fans to increase the effectiveness of open windows, and making changes to the HVAC or air filtration systems.
 - b) Avoiding crowded and/or poorly ventilated indoor activities (e.g., engaging in outdoor activities when possible).
 - c) Open or crack windows in buses and other forms of transportation to improve air circulation, if doing so does not pose a safety risk.
6. **Handwashing and Respiratory Etiquette:** Promoting [handwashing and covering coughs and sneezes](#).
7. **Staying Home When Sick and Getting Tested**
 - a) Strong messaging encouraging students and staff to stay home if sick or having [COVID-19 symptoms](#).
 - b) Strong messaging encouraging students and staff, regardless of vaccination status, to get tested for COVID-19 if having [symptoms](#) or if they are a close contact of someone who has COVID-19.
8. **Contact Tracing, in Combination with Quarantine**, and collaborating with the local health department.
9. **Cleaning and Disinfection:** cleaning once a day is usually enough to sufficiently remove potential virus that may be on surfaces. Disinfecting (using disinfectants on the [U.S. Environmental Protection Agency Disinfectants for COVID-19](#)) removes any remaining germs on surfaces, which further reduces any risk of spreading infection. CDC has information on routine [cleaning](#) to help maintain healthy facilities.

2021-2022 COVID-19 K-12 SCHOOL GUIDANCE

LENAWEE COUNTY HEALTH DEPARTMENT

Updated 10-20-2021

More information for schools can be found at CDC's [Guidance for COVID-19 Prevention in K-12 Schools](#)

Note: Schools and camps should consider using expanded testing for extracurricular activities that present an increased risk of COVID-19 transmission. Testing can be used in combination with other prevention strategies to identify cases and reduce the risk of further transmission.

Metrics to Assess Risk

The more COVID-19 in the community, the greater risk the school may face an outbreak and students may miss in-person learning time. Therefore, the number and intensity of prevention strategies can be adjusted based on the level of COVID-19 transmission in the community where the school is located. Prevention strategies can allow in person learning to be maintained, even during high levels of transmission in the surrounding community.

LCHD will look at the following data points to support school superintendents and administrators in making informed and educated decisions that are best for school operations, students and staff.

- Level of [community transmission](#) of COVID-19.
- COVID-19 [vaccination coverage](#) in the community and among students, teachers, and staff.
- **Outbreaks in school building present:** an [outbreak](#) is defined as multiple cases comprising at least 10% of students, teachers, or staff within a specified core group* OR at least three (3) cases within a specified core group meeting criteria for a probable or confirmed school-associated COVID-19 case with symptom onset or positive test result within 14 days of each other; who were not identified as close contacts of each other in another setting (i.e., household) outside of the school setting; AND epidemiologically linked in the school setting or a school-sanctioned extracurricular activity.

* A "core group" includes but is not limited to extracurricular activity†, cohort group, classroom, before/after school care, etc.)

† A school sanctioned extracurricular activity is defined as a voluntary activity sponsored by the school or local education agency (LEA) or an organization sanctioned by the LEA. Extracurricular activities include, but are not limited to, preparation for and involvement in public performances, contests, athletic competitions, demonstrations, displays, and club activities.

QUARANTINE

Quarantine is for individuals who have been in [close contact](#) with someone who has COVID-19.

A **close contact** is someone who has been within 6 feet of a COVID positive individual for a cumulative total of 15 minutes or more over a 24 hour period while the COVID positive individual was contagious. A person with COVID-19 is considered contagious starting 2 days before they started having symptoms. If they never have symptoms, they are considered contagious starting 2 day before their COVID-19 test was performed.

School Reporting Process

1. Schools report COVID positive individuals and their close contacts to the Lenawee County Health Department through the online Communicable Disease Reporting software (KKZO). Schools should contact Meredith Mackey at the Lenawee County Health Department with questions about accessing

2021-2022 COVID-19 K-12 SCHOOL GUIDANCE

LENAWEE COUNTY HEALTH DEPARTMENT

Updated 10-20-2021

this program. Meredith.Mackey@lenawee.mi.us.

2. Schools notify parents that their student has been identified as a close contact.
3. **Schools should report all close contacts even if the individual is exempt from quarantine.**
4. Schools indicate if exposure was at least 3 feet and if both the COVID positive individual and the close contact were masked during exposure.
5. Schools indicate which students will be participating in Alternate School Quarantine: Test to Stay in School. Parents must provide consent.
6. The health department sends parent a quarantine letter for their student.

Length of Quarantine

LCHE is currently utilizing the 10-day reduced quarantine strategy. Individuals quarantine for 10 days past the last date of close contact with the COVID positive individual. For quarantine purposes, the last date of close contact is considered day 0. The following day is day 1, the day after that is day 2, etc. The quarantined individual can return to normal activities on day 11, but should monitor for symptoms through day 14. If symptoms develop, the individual should immediately isolate and get tested.

| Day 0 | Day 1 | Day 2 | Day 3 | Day 4 | Day 5 | Day 6 | Day 7 | Day 8 | Day 9 | Day 10 | Day 11-14 |
|----------------------------|--------------------|-------|-------|-------|-------|-------|-------|-------|-------|--------|-----------------------------|
| Last date of close contact | Quarantine at home | | | | | | | | | | Return to normal activities |

Household Contacts

Students who live in the same house as a COVID positive person must quarantine for 10 days after the last day of close contact. If the COVID positive household member cannot isolate away from others in the home, then the last day of close contact is considered the last day that any COVID positive individual in the home was contagious. A person with COVID-19 is considered contagious starting 2 days before they started having symptoms. If they never have symptoms, they are considered contagious starting 2 days before their COVID-19 test was performed.

Close contacts are required to quarantine for 10 days with the following exceptions:

FULLY VACCINATED STAFF and STUDENTS

- **Individuals who are fully vaccinated are not required to quarantine** (i.e., over two weeks have passed from receipt of the second dose in a two-dose vaccine series, or from receipt of a single-dose vaccine) **if they have remained asymptomatic since their last exposure to COVID-19. They should monitor for symptoms for 14 days.** (Immunocompromised people need to consult their healthcare provider about these recommendations, even if fully vaccinated.) **Fully vaccinated individuals should get tested three to five days after their exposure (even if they do not have symptoms) and wear a mask indoors in public for 10 days following exposure or until their test result is negative.** They must isolate for 10 days if their test result is positive.

2021-2022 COVID-19 K-12 SCHOOL GUIDANCE

LENAWEE COUNTY HEALTH DEPARTMENT

Updated 10-20-2021

INDIVIDUALS PREVIOUSLY DIAGNOSED WITH COVID

- Individuals previously diagnosed with COVID-19 who are **asymptomatic** are not required to quarantine if they have recovered from COVID-19 within the previous 90 days, measured from the date of symptom onset (or, if asymptomatic, the date of the first positive test). Documentation of a positive test from a provider, such as a pharmacy or community testing site, is required.

Notification to LCHD of Known Staff and Student Exposures that occurred not on School Property

To best prevent the introduction of COVID into the school, the health department requests that schools report any known outside exposure of staff and students to COVID using online Communicable Disease Reporting software (KKZO). They should indicate name of positive case, relationship to exposed student, and that exposure occurred outside of school. Examples include:

- A parent notifying the school that their child has been in close contact with a grandparent who is COVID positive.
- A teacher notifying the school that their spouse has recently tested positive for COVID.

Standard School Quarantine and Alternate School Quarantine

The following pages provide information and eligibility for the following quarantine options:

- Standard School Quarantine
- Standard School Quarantine with Testing
- Alternate School Quarantine: Stay in School – No Testing Required. Among other eligibility requirements, both the positive individual and the close contact were masked during exposure and at least 3 feet apart.
- Alternate School Quarantine: Test to Stay in School. Among other eligibility requirements, both the positive individual and the close contact were masked during exposure and less than 3 feet apart.

Please note: If any additional cases develop in the classroom or if LCHD identifies ongoing transmission in the building, LCHD may determine that alternate school quarantine is no longer a viable option.

2021-2022 COVID-19 K-12 SCHOOL GUIDANCE

LENAWEE COUNTY HEALTH DEPARTMENT

Updated 10-20-2021

Standard School Quarantine

Individuals identified as close contacts **are required to quarantine** for 10 days unless they are fully vaccinated or were previously diagnosed with COVID as described above.

Who is eligible? All Lenawee County K-12 school staff and students.

Summary: Individuals quarantine at home for 10 days past the last date of close contact with the COVID positive individual.

| Key | Stay Home | Attend School with Restrictions | Attend School without Restrictions |
|-----|-----------|---------------------------------|------------------------------------|
|-----|-----------|---------------------------------|------------------------------------|

| Standard School Quarantine | | | | | | | | | | | |
|--|--|-------|-------|-------|-------|-------|-------|-------|-------|--------|--|
| Day 0 | Day 1 | Day 2 | Day 3 | Day 4 | Day 5 | Day 6 | Day 7 | Day 8 | Day 9 | Day 10 | Day 11-14 |
| Exposure to COVID-19 positive individual | Monitor for symptoms of COVID-19. If symptoms develop, isolate immediately and get tested for COVID-19. Staff/Student <u>cannot</u> ride the bus, attend in-person school, participate in sports, in-person after school activities, or in-person extracurricular activities. | | | | | | | | | | Quarantine complete. Staff/Student can return to normal activities. Masking is strongly recommended. |

2021-2022 COVID-19 K-12 SCHOOL GUIDANCE

LENAWEE COUNTY HEALTH DEPARTMENT

Updated 10-20-2021

Standard School Quarantine with Testing

Who is eligible? All Lenawee County K-12 staff and students.

Summary: This option allows close contacts to return to school on day 8 with a negative PCR or rapid antigen test collected on day 6 or 7. The test must be conducted at the school by trained personnel* or at a community testing site (pharmacy, healthcare provider, county testing site). Results from home test kits will not be accepted.

*All testing results from tests performed at the school must be entered into the MDHHS reporting system

https://www.michigan.gov/coronavirus/0,9753,7-406-98178_104699_104700_105077---,00.html

Eligibility Requirements:

- Individuals must be tested on day 6 or 7 with either a PCR or rapid antigen.
- For home exposure: If the COVID positive household member cannot isolate away from others in the home, then the last day of close contact is considered the last day that any COVID positive individual in the home was contagious. A person with COVID-19 is considered contagious starting 2 days before they started having symptoms. If they never have symptoms, they are considered contagious starting 2 day before their COVID-19 test was performed.
- The close contact must be tested on day 6 or 7, after the COVID positive individual is finished being contagious.
- A copy of the negative test result must be submitted to the school for verification prior to the student returning to school.
- They may return to school and participate in all activities while wearing a mask on Day 8, 9 and 10.
- They must monitor for symptoms for 14 days after exposure.
- If an individual feels ill or develops symptoms of COVID-19, they should isolate at home and get tested for COVID-19.

| Key | Stay Home | Attend School with Restrictions | Attend School without Restrictions |
|-----|-----------|---------------------------------|------------------------------------|
|-----|-----------|---------------------------------|------------------------------------|

Standard School Quarantine with Testing

| Day 0 | Day 1 | Day 2 | Day 3 | Day 4 | Day 5 | Day 6 | Day 7 | Day 8 | Day 9 | Day 10 | Day 11-14 |
|--|---|-------|-------|-------|-------|--|-------|--|-------|--------|---|
| Exposure to COVID-19 positive individual | Monitor for symptoms of COVID-19. If symptoms develop, isolate immediately and get tested for COVID-19. Staff/Student <u>cannot</u> ride the bus, attend in-person school, participate in sports, in-person after school activities, or in-person extracurricular activities. Plan ahead. Contact the school, or schedule an appointment with a testing facility to be tested on Day 6 or 7 of the quarantine period (PCR or antigen tests are acceptable). Only one negative test result is required to return to school on Day 8. <u>At-home test results will not be accepted.</u> | | | | | Staff/Student is tested for COVID-19 by a Provider or at school. PCR or antigen tests are acceptable. At-home test results will <u>not</u> be accepted. Staff/Student <u>cannot</u> ride the bus, attend in-person school, participate in sports, in-person after school activities, or in-person extracurricular activities. | | Provide proof of one negative test result to the <u>school</u> from test taken on day 6 or 7. Staff/Student can return to school and participate in all activities <u>while wearing a mask</u> . Continue to watch for any signs or symptoms of COVID-19. If symptoms develop, isolate immediately, and get tested for COVID-19. | | | Quarantine complete. Staff/Student can return to normal activities. Masking is strongly recommended. Monitor for symptoms. |

2021-2022 COVID-19 K-12 SCHOOL GUIDANCE

LENAAWEE COUNTY HEALTH DEPARTMENT

Updated 10-20-2021

Alternate School Quarantine: Stay in School (SIS)– No Testing Required

Who is eligible? Lenawee County K-12 students who meet specific eligibility requirements including that both the positive individual and the close contact were masked during exposure and at least 3 feet apart and exposure occurred at school.

Summary: This option allows students to stay in school provided a mask is worn and **3 feet of distance is maintained**.

To be eligible to participate in Alternate School Quarantine: Stay in School-No Testing Required, students must meet all the criteria listed below.

Eligibility Requirements:

- Exposed individual is a student and does not have symptoms
- Exposure occurred at school (this does not include exposures that occurred during an extracurricular activity, during meals, or during before/after care in a school setting)
- Both the COVID positive individual and close contact were masked at the time of exposure
- **The exposed student was at least 3 feet from the COVID positive individual during exposure**
- Student must wear a mask at all times while in school or on the bus for ten (10) days after exposure
- Student cannot participate in other extracurricular activities for ten (10) days after exposure
- Student will isolate at home immediately if COVID-19 symptoms develop

| Key | Stay Home | Attend School with Restrictions | Attend School without Restrictions |
|-----|-----------|---------------------------------|------------------------------------|
|-----|-----------|---------------------------------|------------------------------------|

| Alternate School Quarantine: Stay in School (SIS)– No Testing Required. | | | | | | | | | | | |
|---|---|-------|-------|-------|-------|-------|-------|-------|-------|--------|--|
| Day 0 | Day 1 | Day 2 | Day 3 | Day 4 | Day 5 | Day 6 | Day 7 | Day 8 | Day 9 | Day 10 | Day 11-14 |
| Exposure to COVID-19 positive individual at school | Student can ride bus and attend school <u>while wearing a mask</u> . The student <u>cannot</u> participate in sports, in-person after school activities, or in-person extracurricular activities, through day 10. However, if a negative test is collected on day 6 or 7 and submitted to the school, the student may return to all activities on days 8-10 with masking. <u>At-home test results will not be accepted</u> If symptoms develop or the student tests positive for COVID-19, stay home and isolate immediately. | | | | | | | | | | Quarantine complete. Student can return to normal activities. Masking is strongly recommended. |

2021-2022 COVID-19 K-12 SCHOOL GUIDANCE

LENAWEE COUNTY HEALTH DEPARTMENT

Updated 10-20-2021

Alternate School Quarantine: Test to Stay in School (TTS)

Who is Eligible: Lenawee County K-12 students who meet specific eligibility requirements including that both the positive individual and the close contact were masked during exposure and less than 3 feet apart and exposure occurred at school. Schools who choose to participate in this testing option must sign and return the Opt In Notification document to the Lenawee County Health Department (Attachment 2).

Summary: This option allows students to stay in school as long as they conduct daily symptom checks and daily COVID tests through day 7. Results from home test kits will not be accepted.

Eligibility Requirements:

- Exposed individual is a student and has no symptoms.
- Both the COVID positive individual and close contact were masked during exposure
- Exposure of less than 3 feet occurred at school (this does not include exposures that occurred during an extracurricular activity, during meals, or during before/after care in a school setting)
- Parent and student agree to:
 - Daily testing for seven (7) days after exposure*. Results from home test kits will not be accepted. After the first test is completed, student can ride bus and attend school while wearing a mask.
 - Daily symptom screening for seven (7) days after exposure.
 - Wear a mask at all times while in school for ten (10) days after exposure.
 - Not participate in other extracurricular activities (apart from taking the bus and going to class) for seven (7) days after exposure. Return to all activities on days 8-10 while masked.
 - Monitor for symptoms through day 14. Isolate at home immediately if symptoms develop.

*If the 7th day falls on a non-school day, the student must be tested the next school day, before returning.

All testing results from tests performed at the school must be entered into the MDHHS reporting system

https://www.michigan.gov/coronavirus/0,9753,7-406-98178_104699_104700_105077---,00.html

| Key | Stay Home | Attend School with Restrictions | Attend School without Restrictions |
|-----|-----------|---------------------------------|------------------------------------|
|-----|-----------|---------------------------------|------------------------------------|

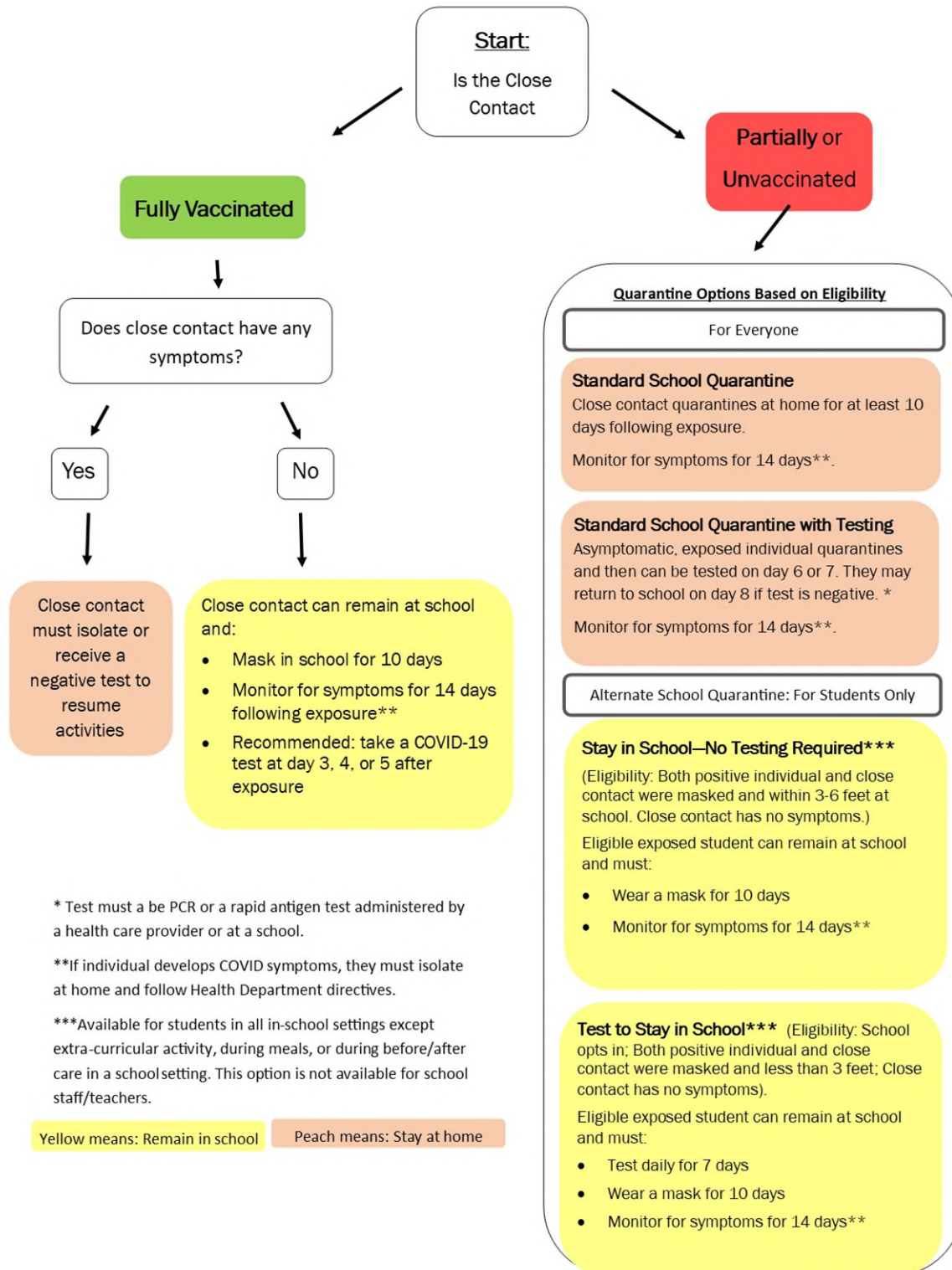
| Alternate School Quarantine: Test to Stay in School (TTS) | | | | | | | | | | | |
|---|--|-------|-------|-------|-------|-------|---|-------|-------|--|-----------|
| Day 0 | Day 1 | Day 2 | Day 3 | Day 4 | Day 5 | Day 6 | Day 7 | Day 8 | Day 9 | Day 10 | Day 11-14 |
| Exposure to COVID-19 positive individual at school | In order to participate in Alternate School Quarantine: Test to Stay in School, <u>daily</u> symptom checks and daily COVID-19 testing are required through Day 7. If the 7 th day falls on a non-school day, the student must be tested the next school day. After the first test is completed, the student can ride bus and attend school <u>while wearing a mask</u> . The student <u>cannot</u> participate in sports, in-person after school activities, or in-person extracurricular activities. If symptoms develop or the student tests positive for COVID-19, stay home and isolate immediately. | | | | | | Student can participate in all activities <u>while wearing a mask</u> . Continue to watch student for any signs or symptoms of COVID-19. If symptoms develop, isolate immediately, and get tested for COVID-19. Daily testing no longer required. | | | Quarantine complete. Student can return to normal activities. Masking is strongly recommended. Monitor for symptoms | |

2021-2022 COVID-19 K-12 SCHOOL GUIDANCE

LENAWEE COUNTY HEALTH DEPARTMENT

Updated 10-20-2021

Flow Chart



2021-2022 COVID-19 K-12 SCHOOL GUIDANCE

LENAWEE COUNTY HEALTH DEPARTMENT

Updated 10-20-2021

Acronyms and Definitions

CDC: Centers for Disease Control and Prevention

LCHD: Lenawee County Health Department

MDHHS: Michigan Department of Health and Human Services

SIS: Alternate School Quarantine – Stay in School – No Testing Required

TTS: Alternate School Quarantine - Test to Stay in School

Asymptomatic – without symptoms

Case – an individual who has been diagnosed with COVID-19

Close Contacts

A **close contact** is someone who has been within 6 feet of a COVID positive individual for a cumulative total of 15 minutes or more over a 24 hour period while the COVID positive individual was contagious. A person with COVID-19 is considered contagious starting 2 days before they started having symptoms. If they never have symptoms, they are considered contagious starting 2 days before their COVID-19 test was performed. Close contacts are at risk of getting sick. They must quarantine unless they are **asymptomatic** AND one of the following:

- They are fully vaccinated. Fully vaccinated means that two weeks have passed since that person's last vaccine dose (completion of vaccine series), OR
- They have recovered from COVID-19 within the previous 90 days, measured from the date of symptom onset (or the date of the first positive test if they were without symptoms). Documentation of a positive test from a provider, such as a pharmacy or community testing site, is required.

Contagious Period A person with COVID-19 is considered contagious starting 2 days before they started having symptoms. If they never have symptoms, they are considered contagious starting 2 days before their COVID-19 test was performed.

Fully Vaccinated Persons for whom at least two weeks has passed after receiving the final dose of an FDA-approved or authorized COVID-19 vaccine.

Household close contact A close contact that lives with a COVID-19 case in a shared dwelling with common kitchen or bathroom facilities.

Isolation - The separation of a person or group of people known or reasonably believed to be sick with COVID-19 and infectious, from those who are not infected.

Quarantine - The separation of a person or group of people reasonably believed to have been exposed to someone with COVID-19 but not yet symptomatic, from others who have not been exposed.

2021-2022 COVID-19 K-12 SCHOOL GUIDANCE

LENAWEE COUNTY HEALTH DEPARTMENT

Updated 10-20-2021

Resources

MDHHS School Guidance (August 13, 2021)

https://www.michigan.gov/documents/coronavirus/COVID-19_Guidance_for_Operating_Schools_Safely_728838_7.pdf

MDHHS Quarantine Guidance for Schools (May 21, 2021)

https://www.michigan.gov/documents/mdhhs/MDHHS-Quarantine_Period_Guidance_726293_7.pdf

CDC Guidance for Schools

<https://www.cdc.gov/coronavirus/2019-ncov/community/schools-childcare/k-12-guidance.html>

American Academy of Pediatrics COVID-19 Guidance for Safe Schools

<https://services.aap.org/en/pages/2019-novel-coronavirus-covid-19-infections/clinical-guidance/covid-19-planning-considerations-return-to-in-person-education-in-schools/>

CDC Order requiring the wearing of face masks while on school busses

<https://www.cdc.gov/quarantine/masks/mask-travel-guidance.html>

Science Brief: Transmission of SARS-CoV-2 in K-12 Schools

https://www.cdc.gov/coronavirus/2019-ncov/science/science-briefs/transmission_k_12_schools.html#print

CDC COVID-19 Data Tracker

<https://covid.cdc.gov/covid-data-tracker/#county-view>

Mi Safe Start Map

<https://mistartmap.info/>

MDHHS COVID-19 Vaccine Dashboard

https://www.michigan.gov/coronavirus/0,9753,7-406-98178_103214-547150--,00.html

Association Between K–12 School Mask Policies and School-Associated COVID-19 Outbreaks — Maricopa and Pima Counties, Arizona, July–August 2021

https://www.cdc.gov/mmwr/volumes/70/wr/mm7039e1.htm?s_cid=mm7039e1_w

Pediatric COVID-19 Cases in Counties With and Without School Mask Requirements — United States, July 1–September 4, 2021

https://www.cdc.gov/mmwr/volumes/70/wr/mm7039e3.htm?s_cid=mm7039e3_w